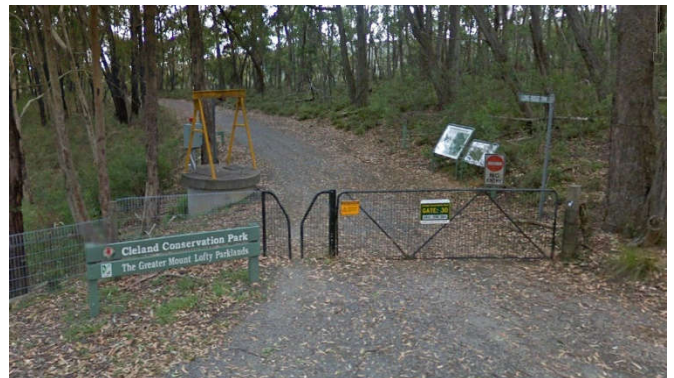


# TRSA V4 Series Cleland Short Course Notes.

Start at the Wine Shanty Track trailhead, adjacent to the water tanks at the top of the Cleland carpark. Finish at Gate 30, Longridge Track trailhead at the Cleland carpark.



Stay on Wine Shanty Track (red) all the way until its endpoint at the Gate 6 convergence adjacent Greenhill road.

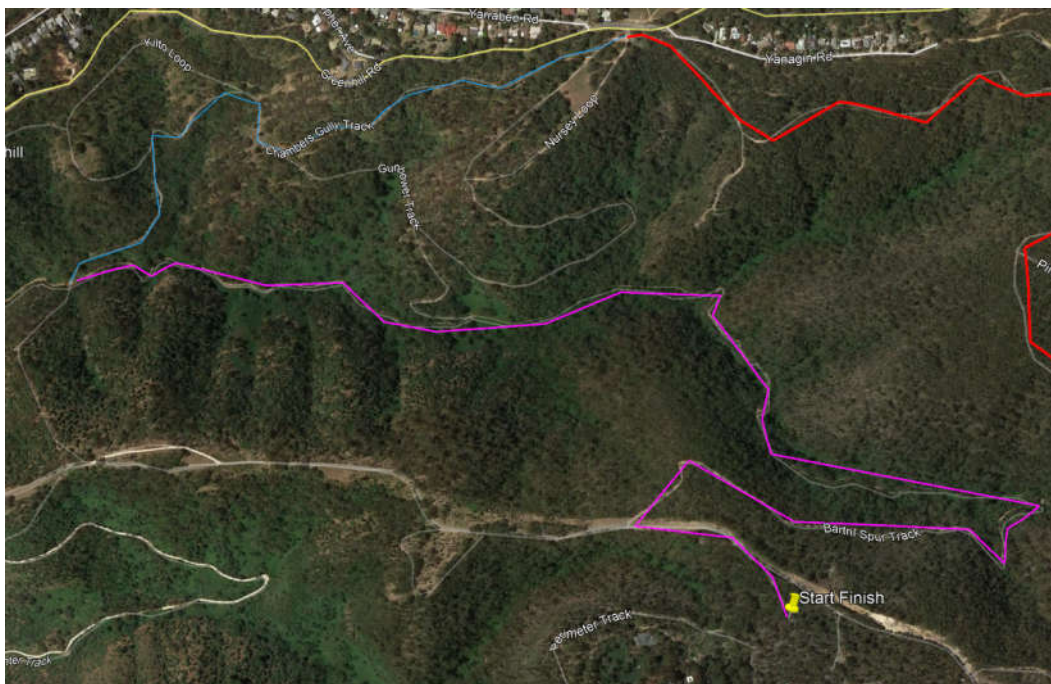


TRSA V4 Series Cleland Short Course.

The convergence is easily recognisable with the large electricity tower. Stay straight to go onto Chambers Gully Track (blue) and then stay right at the Y junction to continue on Chambers Gully Track (blue). DO NOT veer to the left onto Gunbower Track (orange).



Head down Chambers Gully Track with no turnoffs until you get to the T junction at the bottom and turn left onto Bartril Spur Track (pink). Head all the way up Bartril Spur Track with no turnoffs until you reach its endpoint at Longridge Track. Turn left at Longridge Track where you will head up the hill for 300 metres and then turn right at the fork and go through to gate 30 and the finish point.



TRSA V4 Series Cleland Short Course.